

Support Solutions

A highly dependable solution for extending the performance and reliability of EQUIOS Rite in time-sensitive production lines

TRUST Network Service

Predictive diagnosis based on monitoring of normal EQUIOS Rite status

Provision of regular analytical reports and technical information

Precise identification of malfunctions plus operational support and guidance

TRUST Network Service is provided as part of the EQUIOS Rite maintenance contract. Please contact your nearest sales representative for further details.

Protection of clients' EQUIOS Rite system

TRUST Guard

Accurate understanding of EQUIOS Rite conditions and automatic transmission of logs

Communication with clients

TRUST Dialog

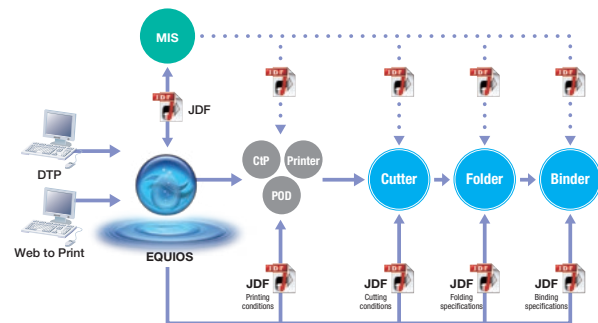
Provision of regular analytical reports and technical information

Remote assistance of clients

TRUST Assist

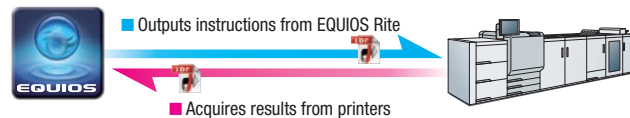
Precise identification of malfunctions plus operational support and guidance

Full automation from data input to final processing



Improved links with toner-based POD

EQUIOS Rite can be linked with production printers (toner-based POD) available from most companies. These linkages allow EQUIOS Rite to acquire, manage and issue instructions for paper data, as well as to monitor the overall printing progress and results. Handling small-lot jobs becomes easier than ever before.



Operating environment (server)

Windows Server 2012 Standard R2 64 bit
Windows Server 2016
Windows 10 IoT Enterprise LTSC 2016 64 bit **NEW**

Operating environment (client)

Windows systems: Windows 7 Ultimate/Professional 32 bit/64 bit
Windows 8.1 Professional
Windows 10 IoT Enterprise LTSC 2016 64 bit
Windows Server 2012 Standard R2 64 bit
Windows Server 2016 Standard
Windows 10 Pro, Windows 10 Enterprise

Mac systems: macOS X 10.8.3 to 10.14 (recommended Java version: 1.8.0_144)

For 8-page or larger CIP devices, please select a Windows Server OS to maintain productivity and stabilize operation.

Recommended hardware specifications

EQUIOS server	CPU: 2 GHz DualCore or higher Memory: At least 4 GB HDD: At least 100 GB of available space
EQUIOS client (Windows)	CPU: 1 GHz Pentium 4 equivalent or higher Memory: At least 2 GB
EQUIOS client (Mac)	CPU: 1 GHz or higher Memory: At least 2 GB

Product Lineup

EQUIOS PT-R

EQUIOS PT-R includes EQUIOS Center, enabling integrated management of all EQUIOS workflows, and Adobe® PDF Print Engine. EQUIOS PT-R Drive can also be incorporated to provide advanced processing to maximize the utility of the overall system.

EQUIOS Center effectively manages content input, jobs, imposition, CMS and output device conditions. It also controls multiple EQUIOS PT-R Drives and enables flexible operation of the entire CIP process.

EQUIOS PPP

EQUIOS PPP is a version with limited functionality focused on outputting files from EQUIOS PT-R. EQUIOS Center and Polished Drive handle PostScript-to-PDF or PDF-to-PDF conversion by combining SCREEN's expertise with Adobe and Enfocus Preflight technologies
(Connection to CIP devices is not available.)

iPad is a trademark of Apple Inc., registered in the U.S. and other countries.

SCREEN



EQUIOS Rite

Workflow Solution

Proactive Print Management Starts Here



EQUIOS Rite is built on the innovative prepress systems established in Trueflow, combining a universal workflow concept with the latest technologies. As a solution platform, EQUIOS Rite provides a major step forward in automation and ease of use in all stages from overall process design to imposition, as well as progress and quality management.



SCREEN Graphic Solutions Co., Ltd.

HEAD OFFICE
• Tenjin-kita-machi 1-1, Teranouchi-agaru 4-chome, Horikawa-dori, Kamigyo-ku, Kyoto 602-8585, Japan / Tel: +81-75-414-7610

SCREEN GP Americas, LLC
• 150 Innovation Drive, Ste A, Elk Grove Village, IL 60007, U.S.A. / Tel: +1-847-870-7400 / Fax: +1-847-870-0149 www.screenamericas.com

SCREEN GP Europe B.V.
• Bouwerij 46, 1185XX Amstelveen, The Netherlands / Tel: +31-20-456-78-00 www.screen europe.com
U.K. office / Tel: +44-1582-72-5400

SCREEN Holdings Singapore PTE. Ltd.
• 29, Kaki Bukit View, #02-00, Kaki Bukit Techpark II, Singapore 415963 / Tel: +65-6845-3288 / Fax: +65-6741-2168 www.screen sp.com.sg

SCREEN GP China Co., Ltd.
• Room 2001 - 2003, 20/F Cable TV Tower 9 Hoi Shing Road Tsuen Wan, N.T. Hong Kong / Tel: +852-2953-0038 / Fax: +852-2755-8683 www.screen china.com
Shanghai office / Tel: +86-21-3126-5122 / Fax: +86-21-5218-2199
Beijing office / Tel: +86-10-6708-9271 / Fax: +86-10-6708-9395
Guangzhou office / Tel: +86-20-3887-9650 / Fax: +86-20-3887-9653

SCREEN GP Taiwan Co., Ltd.
• 4th Floor, No. 126-1, Min-tsu West Road, Taipei, Taiwan R.O.C. / Tel: +886-2-2586-2711 / Fax: +886-2-2591-4367

SCREEN HD Korea Co., Ltd.
• K-TOWER 11F, 88, Ilje-ro, Minan-gu, Anyang-si, Gyeonggi-do, 13901, Korea / Tel: +82-2-727-0860 / Fax: +82-2-727-0876 www.screen-korea.com

SCREEN GP Australia PTY., Ltd.
• Suite 15A, 2 Eden Park Drive, Macquarie Park, NSW 2113, Australia / Tel: +61-2-9016-3400 / Fax: +61-2-9016-3425 www.screen aust.com.au

Internet web site : www.screen.co.jp/ga
www.screenamericas.com
www.screen europe.com

The QR code on the right can be used to check whether this brochure is the latest version.



We reserve the right to alter product design and specifications without prior notice.

No.202-201E V2-E SCI 06-21

Printed by the Truepress Jet520HD+ / SC inks

EQUIOS Rite

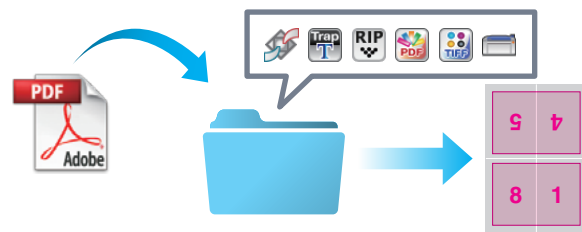
Total automation and streamlining accelerate your printing business

Automation

Hot folder operation supports rule-based automation

All required processes including input, trapping, imposition and output can be planned in advance as job templates for automatic execution. No changes are needed to the output settings even if the output destination or imposition pattern is revised.

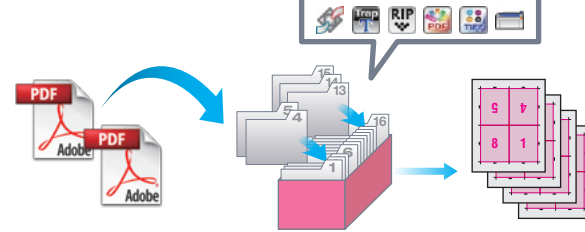
Automatic drag and drop processing



Flexible job execution smoothly handles processing changes

Using multiple job tickets enables a wide range of tasks to be executed. It provides flexibility when submitting data in sections or replacing page data, as well as when the imposition layout needs to be altered due to a sudden change to a press.

Streamlining of complicated tasks



Easy operation

Simple Job Controller streamlines processing

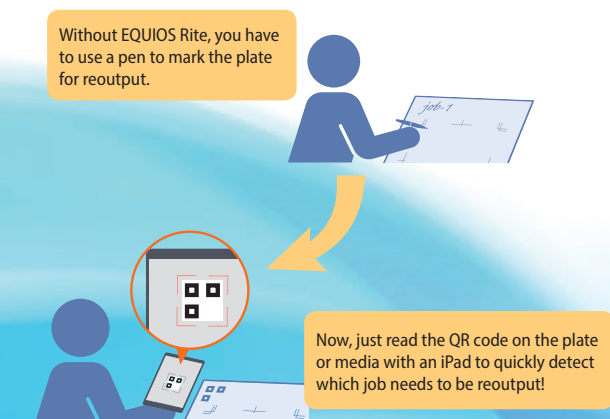
An iPad can be used to register and output printing instructions for jobs. These jobs can be registered as soon as their orders are received, which significantly improves efficiency. Anyone can create output instructions by designing templates for imposition and output in advance.



QR codes allow checking of jobs requiring reprinting

When a plate is damaged and needs to be output again, you can detect which plate it is by reading the QR code on the plate with an iPad. This reduces the time and effort required to find the job data and also eliminates mistakes.

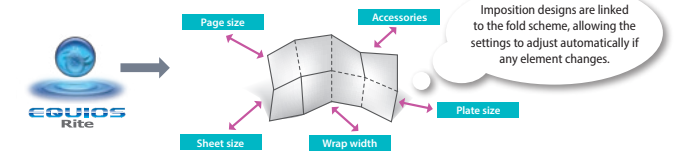
A barcode option for books is necessary to create QR codes.



Imposition

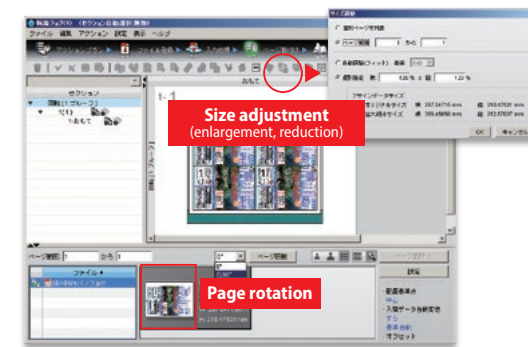
Simple imposition design utilizes fold catalogs

EQUIOS is compatible with CIP4 and is preloaded with EQUIOS standard fold catalogs. A variety of imposition patterns can be applied in a few simple steps. Changing the templates is also easy and there is no need to manage large numbers of similar layouts.



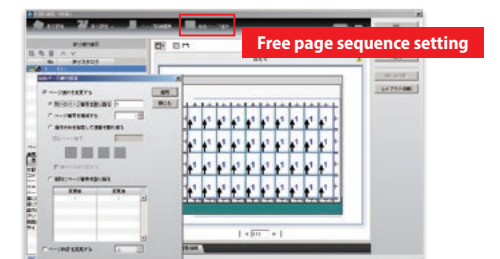
Automatic adjustment of page size

Rotation and enlargement/reduction can be set freely for each page.



Free progress imposition

Items such as playing and trading cards can be imposed with greater efficiency.



Reliability

Latest RIP core improves stability of output results

EQUIOS Rite incorporates Adobe's latest RIP core, Adobe® PDF Print Engine, and the latest Adobe® PDF Library. It also includes PitStop for enhanced preflight functionality.

PDFs with transparency effects are now processed directly with higher accuracy. Reproduction of line widths and colors composed of overprints has also been greatly improved. EQUIOS Rite truly improves the productivity of the latest PDF-centered workflows.

Support of Mercury RIP Architecture

The Mercury RIP Architecture is a scalability framework and multi-tier cache technology developed by Adobe for its PDF Print Engine. It enables enhanced, high-performance rendering.

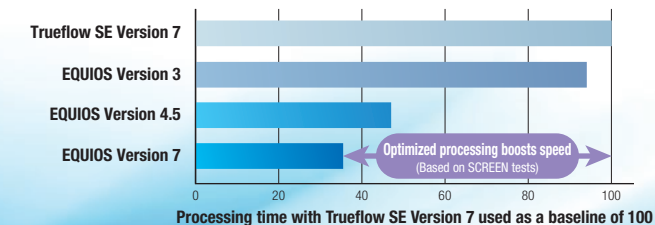


High-speed processing

Dramatically faster performance

Comparison of processing times

Tickets: Input processing + Imposition scheme + DotRiff (2400 dpi)
Imposition scheme: A4, 1,030 x 800 mm plate, 40 4-page signatures for both sides, 320 pages



Efficient parallel processing

Supporting parallel processing functionality since its initial release

Comparison of processing times

